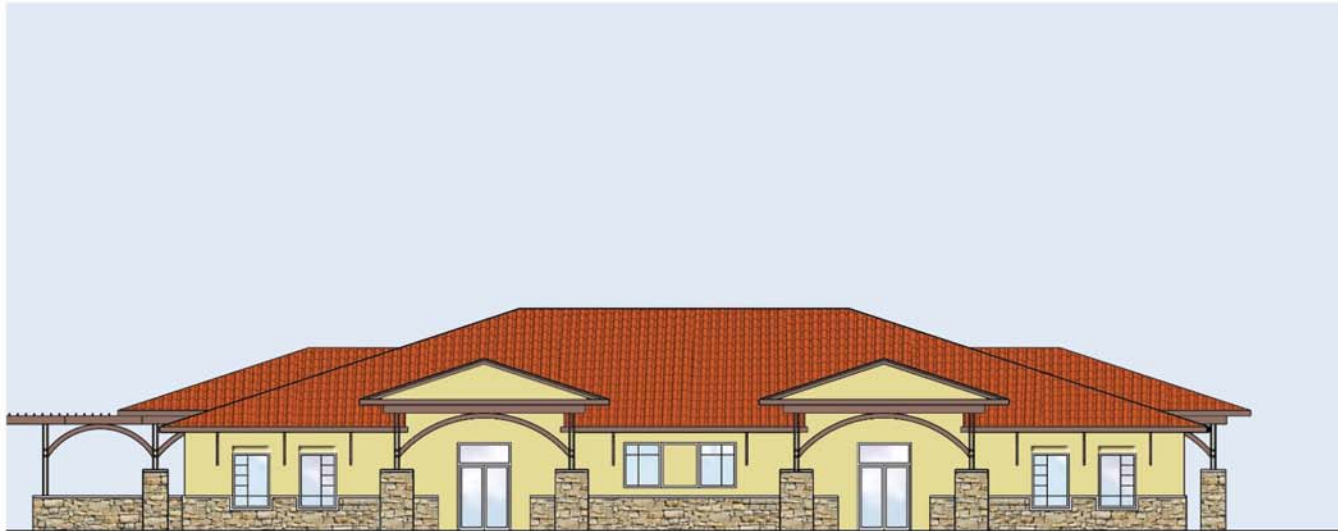


1 EXTERIOR ELEVATION



2 ENLARGED ELEVATION

ENCINO PARK

ROUND ROCK, TEXAS 06.12.07
TAG PROJECT # 7032.1

TOTAL SITE AREA = 154,507 S.F. (3.54 ACRES)

OFFICE SITE = 44,710 S.F. (1.03 ACRES)
OFFICE BUILDING AREA = 8,000 S.F.
OFFICE PARKING = 40 SPACES (1 PER 200 S.F.)

RESTAURANT BUILDING AREA = 3,500 SF
RESTAURANT PARKING = 35 SPACES (1PER 100 S.F.)

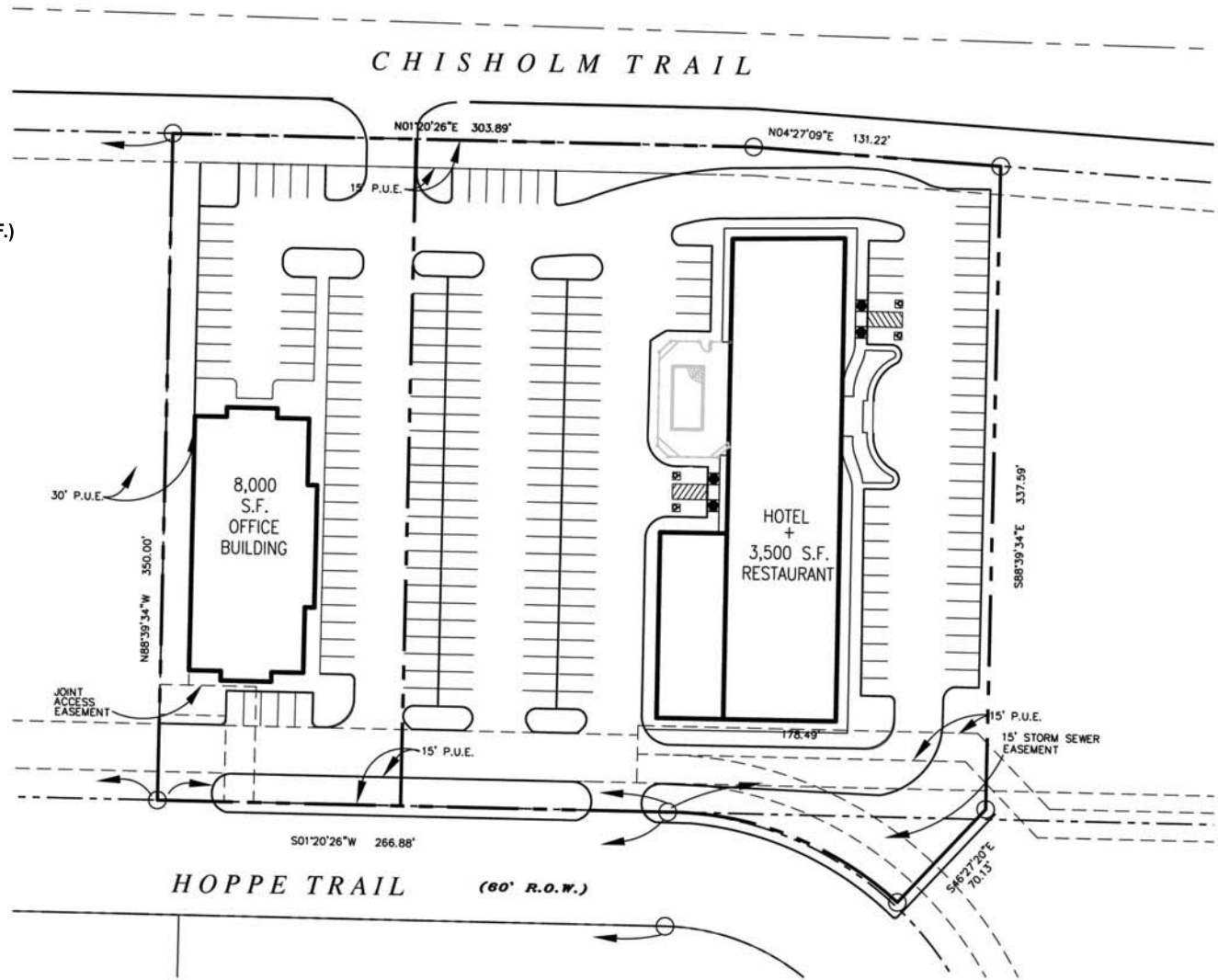
HOTEL SITE = 109,797 S.F (2.52 ACRES)
HOTEL PARKING = 123 SPACES

NOTE: HOTEL PROGRAM ASSUMES

6,000 S.F. CONFERENCE/AMENITY = 40 SPACES
75 BEDROOMS = 75 SPACES
10 EMPLOYEES = 8 SPACES

NOTE: AREAS SHOWN ARE PRELIMINARY
AND SUBJECT TO CHANGE.

NOTE: ASSUMED NO DETENTION POND
REQUIRED. SUBJECT TO VERIFICATION
BY CIVIL ENGINEER.



1 PROPOSED SITE PLAN



ENCINO PARK

ROUND ROCK, TEXAS 09.25.07
TAG PROJECT # 7032.1

